



SIPEI International **S**eminar on Ignatian
Pedagogy and **S**pirituality

Manresa / Barcelona
November 2nd - 8th, 2014

The world is our house

Presentation of experience 1

**BUILDING COMMITMENT THROUGH
BUILDING FAMILIES,
COMMUNITIES, and HOMES
for the POOREST OF THE POOR**

F. Ben Nebres sj

Typhoon Yoyong -December 2004: Floods and Landslides in Gabaldon



Ateneo de Manila committed to build homes for affected families and built Gawad Kalinga Kalayaan Village



GABALDON November 2005

A team of students went for 9 consecutive weekends and were transformed.

I went to Gabaldon for a friend, but it flourished to something more pure and beautiful. I was there for my country, my brothers and sisters who need me there.

It's funny, the entire day I built houses. By the end of it I learned how to inspire and how to be inspired.

I learned there is hope for everyone.

I learned that I have a purpose.

-- Lora Bate



***Through shared reflections and stories,
they found family, meaning, life purpose.***



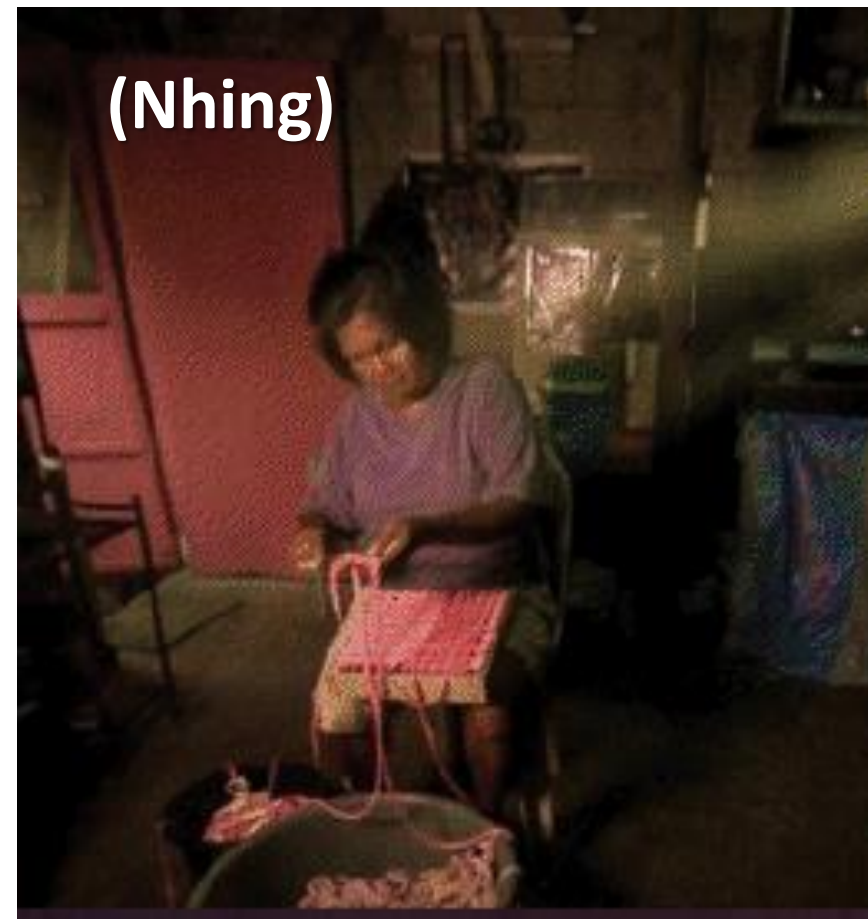
Ateneo Team Gabaldon



Reese Fernandez

Story of Rags2Riches

- The women of Rags2Riches started as scavengers and making rugs out of scrap cloth



A Group of Young Social

The Rags2Riches Founding Team



TJ Agulto



Fr. Xavier Alpasa S.J.



Bam Aquino



Ange Benavides-Bulan



Timi Gomez



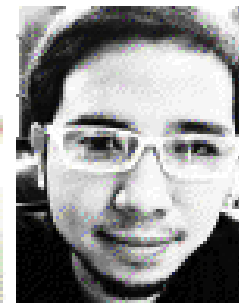
Memey Mendoza



Marn Lim



Reese Fernandez



Mark Ruiz

Tinuring ng grupong ito ang
problemang panlipunan bilang isang
oportunidad.

Rags2Riches, A Social Enterprise built on PEOPLE (poor women), PLANET (ecological concerns), PROFIT (a better life for the poor)





Melissa Yeung

Started with indigenous peoples then established social enterprises

Got Heart Foundation
Social Entrepreneurship:
Creating jobs for poor communities





LONG-TERM
COMMITMENT COMES
FROM: DEEP SHARED
ENGAGEMENT

AND MENTORS WALKING
WITH THEM



EPILOGUE

- The Ateneo School of Management, has become a training hub for social enterprises for poor communities – in partnership with Gawad Kalinga and McKinsey
- Of the 100 or so Social Enterprises for Gawad Kalinga, more than 90% come from the Ateneo School of Management
- A partnership has also developed with French Business Schools like HEC Paris. Over 300 social enterprise interns come every year for 3 months to a year.

Self-Confidence from Achievement





SIPEI

International **S**eminar on Ignatian
Pedagogy and **S**pirituality

The world is our house

Manresa / Barcelona
November 2nd - 8th, 2014